



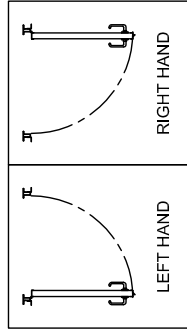
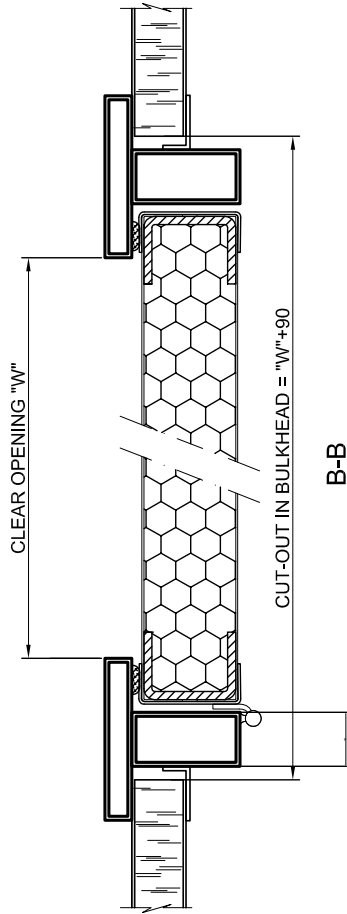
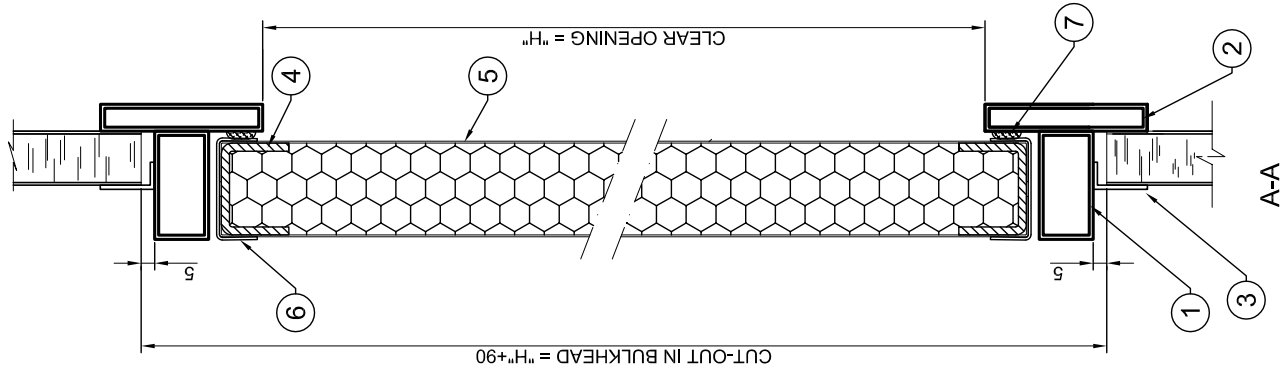
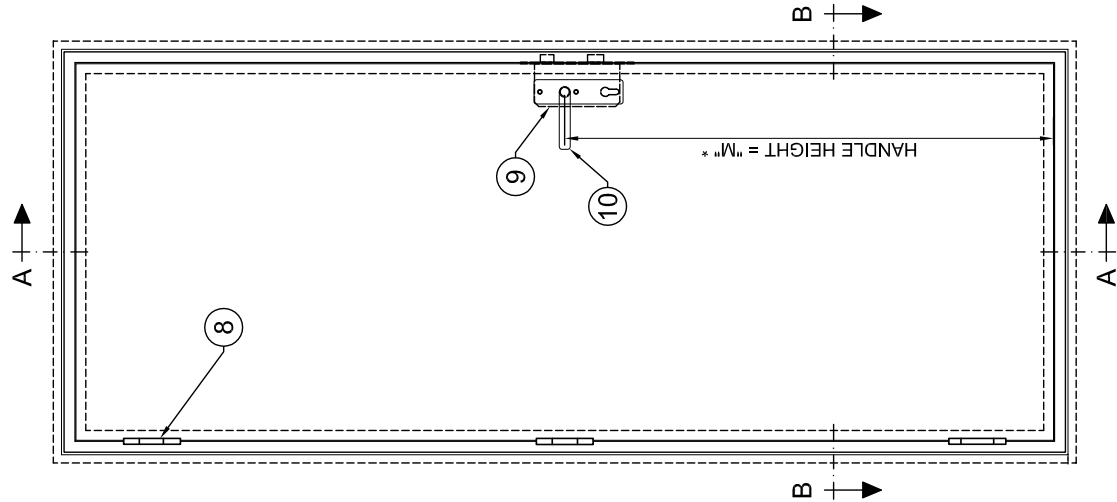
DOORS



HONEYCOMB DOOR

The purpose of this honeycomb door is to get the same class as the bulkhead where it has to be mounted, obtaining a C class room or bulkhead.

DESCRIPTION	HONEYCOMB DOOR
Class:	C
Thickness:	38 / 52 mm
Core material:	Aluminum, mineral wool
Covering:	Galvanized steel (with PVC covering/painted) or stainless steel
Frame:	Stainless steel or lacquered galvanized steel
Standard dimensions:	1800 x 650mm
Approx. weight:	25kg



DOOR COMPONENTS		MATERIAL
10	HANDLE AND PLATE	
9	LOCK	
8	STAINLESS STEEL HINGE	
7	GASKET	
6	LEAF EDGE PROTECTION (STAINLESS STEEL)	
5	ALUMINIUM STEEL SHEET (PAINTED OR PVC FINISHED)	
4	REINFORCEMENT (ALUM)	
3	□ FRAME (ALUM)	
2	□ FRAME (ALUM)	
1	□ FRAME (ALUM)	
MCA.		



TÍTULO:
TITLE: HONEYCOMB DOOR | CN-01

TIPO:
TYPE: C CLASS DOORS

ESCALA:
SCALE: —

M* - BY DEFAULT IT PLACE THE HANDLE HALFWAY UP THE DOOR.
IF REQUIRED ANOTHER HEIGHT, INDICATE THE DIMENSION "M" IN THE DOORS LIST.
CAUTION!! INDICATE THE DIMENSION FROM THE BOTTOM OF THE DOOR OPENING, NOT FROM THE FLOOR.

DIBUJADO POR:
DRAWN BY: L. D.

REVISADO POR:
CHECKED BY: I. P.

APROBADO POR:
APPROVED BY: J. S.

PARTE/DA:
DEPARTAMENT: .

PLANO Nº:
DRAWING Nº: .

REV: 0

HOJA:
SHEET: 1

DE:
OF: —

2013